



ES44AC DIESEL ENGINE W/PROTO-SOUND® 3.0

20-20276-1

20-20276-2

20-20280-1

20-20280-2

20-20279-1

20-20279-2

20-20283-1

20-20283-2

20-20285-1

20-20285-2

20-20284-1

20-20284-2

20-20286-1

20-20286-2

PARTS LIST & EXPLODED VIEW

REV. 07.2015

PARTS LIST: BODY



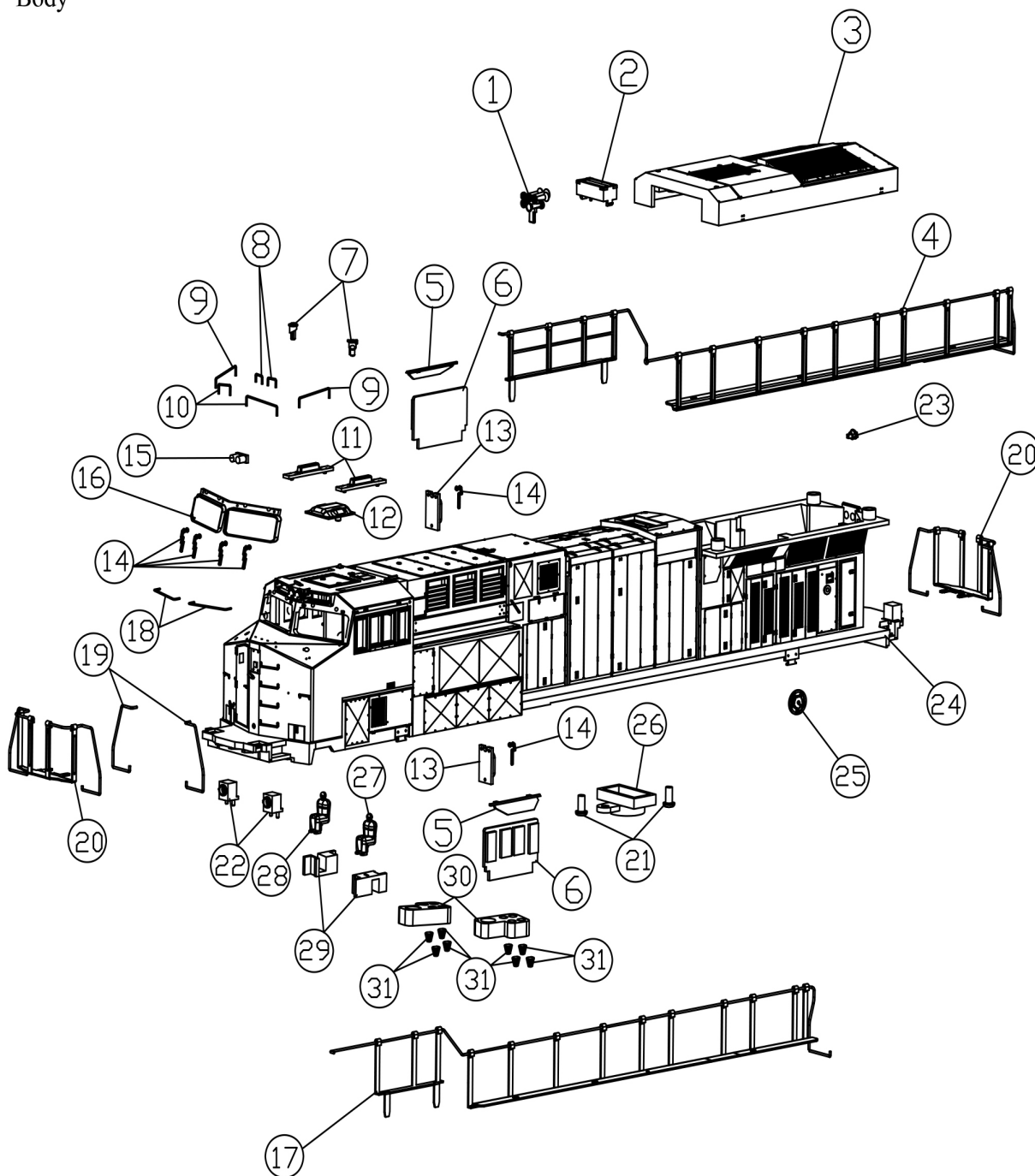
1.) HORN(FIVE CHIME)	BF-2104001001	BODY (CSX CAB# 705)	FC-2104023024
2.) STACK	AA-2104002001	BODY (CSX CAB# 710)	FC-2104023025
3.) RADIATOR COVER,NORFOLK SOUTHERN,BLACK	IH-2104003001	BODY (CSX CAB# 714)	FC-2104023026
RADIATOR COVER,STEELERS,BLACK	IH-2104003002	BODY (CSX CAB# 719)	FC-2104023027
RADIATOR COVER,EVOLUTION HYBRID,BLUE	IH-2104003003	BODY (IOWA INTERSTATE# 502)	FC-2104023028
RADIATOR COVER,KCS,GREEN	IH-2104003004	BODY (IOWA INTERSTATE# 507)	FC-2104023029
RADIATOR COVER,CSX,BLUE	IH-2104003005	BODY (IOWA INTERSTATE# 510)	FC-2104023030
RADIATOR COVER,CANADIAN NATIONAT,BLACK	IH-2104003006	BODY (ROCK ISLAND# 513)	FC-2104023031
RADIATOR COVER,BNSF,GREEN	IH-2104003007	BODY (ROCK ISLAND# 514)	FC-2104023032
RADIATOR COVER,IOWA INTERSTATE,BLACK	IH-2104003008	BODY (CONRAIL# 8098)	FC-2104023033
RADIATOR COVER,ROCK ISLAND,BLACK	IH-2104003009	BODY (NICKEL PLATE ROAD# 8100)	FC-2104023034
RADIATOR COVER,CONRAIL,BLUE	IH-2104003010	25.) BRAKE WHEEL	FC-2104024001
RADIATOR COVER,NICKEL PLATE ROAD,BLACK	IH-2104003011	26.) SMOKE STACK	AA-2104025001
4.) LONG HAND GRAB-L1	FC-2124004001	27.) ENGINEER FIGURE	FI-2104068001
5.) SUN SHADE	CI-2104005001	28.) BRAKEMAN FIGURE	FI-2104069001
6.) SIDE WINDOW GLASS(A)	FA-2104006001	29.) FIREMAN BASE	FI-2104070001
7.) SAND FILLER(B)	FC-2104007001	30.) CONTACT BASE	BI-2104071001
8.) SMALL HAND GRAB	FC-2104008001	31.) CONTACT SPRING	IE-2104072001
9.) NOSE HANDRAIL-A	FC-2104009001		
10.) NOSE HANDRAIL-B	FC-2104010001		
11.) LIFT RING(A)	FC-2104011001		
12.) LIFT RING(B)	FC-2104012001		
13.) FRONT WINDOW GLASS(B)	FA-2104013001		
14.) WIPER FC-2104014001			
15.) FRONT LAMP BRACKET(A)	FA-2104015001		
16.) FRONT WINDOW GLASS	FA-2104016001		
17.) LONG HAND GRAB-R	FC-2104017001		
18.) CABIN HANDRAIL	FC-2104018001		
19.) NOSE HANDRAIL-F	FC-2104019001		
20.) SHORT HAND GRAB	FC-2104020001		
21.) SCREW(M3.0X6.0MM,BLACK)			
22.) FRONT LAMP BRACKET(B)	FA-2104021001		
23.) SAND FILLER(C)	FC-2104022001		
24.) BODY (NORFOLK SOUTHERN CAB# 8000)	FC-2104023001		
BODY (NORFOLK SOUTHERN CAB# 8004)	FC-2104023002		
BODY (NORFOLK SOUTHERN CAB# 8009)	FC-2104023003		
BODY (NORFOLK SOUTHERN CAB# 8015)	FC-2104023004		
BODY (NORFOLK SOUTHERN CAB# 8114)	FC-2104023005		
BODY STEELERS CAB# 2010)	FC-2104023006		
BODY (EVOLUTION HYBRID CAB# 2010)	FC-2104023007		
BODY (KCS CAB#4685)	FC-2104023008		
BODY (KCS CAB#4682)	FC-2104023009		
BODY (KCS CAB#4691)	FC-2104023010		
BODY (KCS CAB#4694)	FC-2104023011		
BODY (CSX CAB# 5210)	FC-2104023012		
BODY (CSX CAB# 5214)	FC-2104023013		
BODY (CSX CAB# 5219)	FC-2104023014		
BODY (CSX CAB# 5223)	FC-2104023015		
BODY (CANADIAN NATIONAT# 2222)	FC-2104023016		
BODY (CANADIAN NATIONAT# 2225)	FC-2104023017		
BODY (CANADIAN NATIONAT# 2230)	FC-2104023018		
BODY (CANADIAN NATIONAT# 2236)	FC-2104023019		
BODY (BNSF# 5726)	FC-2104023020		
BODY (BNSF# 5733)	FC-2104023021		
BODY (BNSF# 5735)	FC-2104023022		
BODY (BNSF# 5744)	FC-2104023023		

EXPLODED VIEW: BODY



ES44AC Diesel Engine

Body



PARTS LIST: CHASSIS



1.) TACH BOARD, PS3	AG-0000102	52.) PICK UP	BD-2104062001
2.) INSULATOR SPACE	BD-2104026001	53.) MOTOR INSULATION BRACKET	IH-2104063001
3.) VOLUME POT(A)	FI-2104027001	54.) SPEAKER	BF-2104064001
4.) VOLUME POT(B)	FI-2104028001	55.) WHEEL AXLE SET A, SCALE, INNER	EG-2104065001
5.) LAMP GUIDE	FA-2104029001	WHEEL AXLE SET A, HI-RAIL, OUTER	EG-2104065002
6.) BACK UP LAMP BRACKET	IH-2104030001	WHEEL AXLE SET A, HI-RAIL, CENTER	EG-2104065003
7.) SCREW(M3.0X5.0MM,BLACK)		WHEEL AXLE SET A, HI-RAIL, INNER	EG-2104065004
8.) SOMKE UNIT	AA-2104073001	WHEEL AXLE SET A, SCALE, OUTER	EG-2104065005
9.) SCREW(M3.0X8.0MM,BLACK)		WHEEL AXLE SET A, SCALE, CENTER	EG-2104065006
10.) SWITCH BRACKET	IH-2104031001	56.) WHEEL AXLE SET B, SCALE, INNER	EG-2104066001
11.) MOTOR (WITH FLYWHEEL STRIPES)	BE-2104032001	WHEEL AXLE SET B, HI-RAIL, OUTER	EG-2104066002
12.) SCREW(M3.0X6.0MM,BLACK)		WHEEL AXLE SET B, HI-RAIL, CENTER	EG-2104066003
13.) HEAT SINK	IH-2104033001	WHEEL AXLE SET B, HI-RAIL, INNER	EG-2104066004
14.) SCREW(M3.0X5.0MM,BLACK)		WHEEL AXLE SET B, SCALE, OUTER	EG-2104066005
15.) RUBBER BAND	BI-4500004	WHEEL AXLE SET B, SCALE, CENTER	EG-2104066006
16.) MOTOR BASE	BI-2104034001	57.) GEAR BOX COVER	EG-2104067001
17.) SCREW(M2.6XL6.0XD4.5MM,BLACK)		58.) CONTACT BOARD	AD-2104074001
18.) 3V SCS BOARD (PS3.0)	AE-1000034		
19.) CSC BRACKET 3V	IH-2104035001		
20.) SCREW(M3.0X3.0MM,BLACK)			
21.) JACK PCB BRACKET	IH-2104036001		
22.) GEVO DRIVER PCB	AE-2104037001		
23.) MOTOR (BLACK FLYWHEEL)	BE-2104038001		
24.) LAMP GUIDE L	FA-2104039001		
25.) LAMP GUIDE D	FA-2104040001		
26.) INTERIOR LIGHT BRACKET	IH-2104041001		
27.) LAMP BRACKET	IH-2104042001		
28.) FRONT LAMP BRACKET	IH-2104043001		
29.) SCREW(M3.0X4.0MM,BLACK)			
30.) T-BAR	IG-2104044001		
31.) COIL COUPLER	DD-2104045001		
32.) T BAR SPRING	IE-2104046001		
33.) WASHER	IB-2104047001		
34.) E-CLIP(3.5X8.0X0.5MM)	IF-2104048001		
35.) HAND GRAB WIRE(H)	FC-2104049001		
36.) LIFT RING	FC-2104050001		
37.) PILOT HANDRAIL	FC-2104051001		
38.) HOSE	FC-2104052001		
39.) E/WIRE FIX BAND	IH-2104053001		
40.) PILOT, BLACK	DG-2104054001		
PILOT, GREEN	DG-2104054002		
PILOT, GOLD	DG-2104054003		
41.) SCREW(1/8"XL16.0X6.4MM,BLACK)			
42.) SPACER	IH-2104055001		
43.) SPEAKER PLATE	BI-400005		
44.) FUEL TANK,SILVER	FC-2104056001		
FUEL TANK,BLACK	FC-2104056002		
45.) FLOOR	DH-2104057001		
46.) HI-AD TRUCK SIDE FRAME-L, BLACK	DB-2124058001		
HI-AD TRUCK SIDE FRAME-L, SILVER	DB-2124058002		
47.) GEER BOX SET	EG-2104059001		
48.) HI-AD TRUCK SIDE FRAME-R, BLACK	DB-2114060001		
HI-AD TRUCK SIDE FRAME-R, SILVER			
49.) INSULATOR(PICK UP,TOP)	BD-2104061001		
50.) SCREW(M2.0X4.0MM,BLACK)			
51.) SCREW(M3.0XL140XD5.2MM,BLACK)			

EXPLODED VIEW: CHASSIS



ES44AC Diesel Engine

Chassis

