



Dreyfuss

4-6-4

20-3045-1



REV.030801



Dreyfuss 4-6-4 Steam Engine

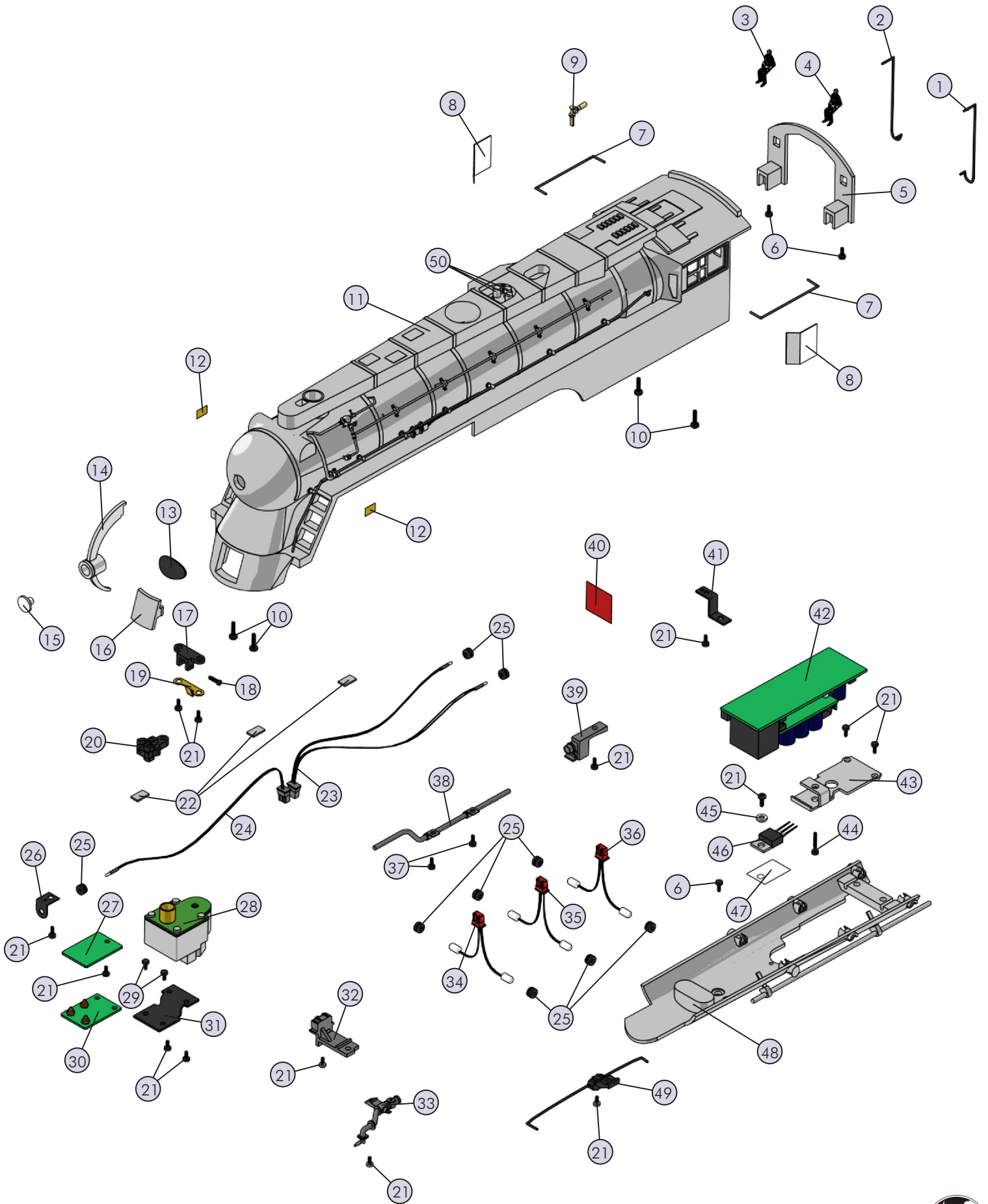
Boiler Parts

Name and Number	Part #	\$Price Per Unit	Name and Number	Part #	\$Price Per Unit
1.) Handrail (gray) (49.5mm long)(left rear)	FB-1100091	2.00	34.) Bulbs (clear)(6v) (2 bulbs)(60.0mm long wires)(blue plug) (grain of wheat)(running lights over drive wheels)	CD-0000005	3.00
2.) Handrail (gray) (49.5mm long)(right rear)	FB-1100092	2.00	35.) Bulbs (clear)(6v) (2 bulbs)(100.0mm long wires)(white plug) (grain of wheat)(running lights over drive wheels)	CD-0000006	3.00
3.) Engineer (white man)	FI-0000001	5.00	36.) Bulbs (clear)(6v) (2 bulbs)(135.0mm long wires)(red plug) (grain of wheat)(running lights over drive wheels)	CD-0000007	3.00
3.) Engineer (black man)	FI-0000032	5.00	37.) Screw (M2.5x3.0mm)(roundhead)	IA-0000022	0.15
4.) Fireman (white man)	FI-0000009	5.00	38.) Feed water pipe (dark gray)	FB-1100103	6.00
4.) Fireman (black man)	FI-0000033	5.00	39.) Water pump (dark gray)	FB-1100104	8.00
5.) Cab back (gray) (w/ seats)	FB-1100093	*12.00	40.) Lens (red) (14.0x18.0x0.5mm)(fire box)	FA-0000070	2.00
6.) Screw (6/32x6.0mm)(roundhead)	IA-0000027	0.15	41.) Bracket (black) (6.0x13.0x22.0mm)(metal)(for fire box bulb)	IH-0000152	2.00
7.) Handrail (gray) (29.8mm long)(top of cab)	FB-1100094	2.00	42.) Boards (Proto-Sound 2.0®)	AE-0000001	*200.00
8.) Lens (clear) (27.0x23.5x0.3mm)(windows)	FA-1100008	1.00	43.) Bracket (aluminum) (for Proto-Sound 2.0® boards)	IH-0000153	3.00
9.) Whistle (brass)	FB-1100095	3.00	44.) Screw (6/32x14.0mm)(roundhead)	IA-0000194	0.15
10.) Screw (6/32x8.0mm)(roundhead)	IA-0000050	0.15	45.) Insulator washer (white) (3.0x6.0x3.0mm)	ID-0000025	0.15
11.) Shell (gray) (New York Central)(# 5445)(boiler)	FB-1100096	*160.00	46.) Voltage regulator (LM2937ET)	AG-0000032	3.00
12.) Builder's plate (blue) (American Locomotive Company)	FB-1100097	3.00	47.) Insulator (clear) (13.0x16.0mm)(single hole)	ID-0000024	0.15
13.) Name plate (blue) (New York Central System)	FB-1100098	5.00	48.) Boiler bottom section (gray)	FB-1100105	*50.00
14.) Boiler front fin (silver) (w/ headlight housing)	FB-1100099	8.00	49.) Power reverse valve (gray)	FB-1100106	8.00
15.) Lens (clear)(headlight)	FA-1100009	2.00	50.) Pop-off valve (gray)	FB-1100156	4.00
16.) Coupler cover (gray)	FB-1100100	4.00	NS.) Walkway (gray)(right) (263.0mm long)(runs along boiler)	FB-1110018	8.00
17.) Bracket (black)(coupler)	IH-0000149	3.00	NS.) Walkway (gray)(left) (263.0mm long)(runs along boiler)	FB-1120018	8.00
18.) Bolt (black) (M1.4x10.0mm)(w/ 1.6x6.5mm oversized shank) (1.2x3.0mm slotted head)	IA-0000304	1.00	NS.) Lens (clear) (3.7x5.7x35.0mm)(0.5mm thick)(front cab window)	FA-0000074	0.25
19.) Clip (copper)(coupler)	IF-0000012	2.00			
20.) Coupler (black)(scale) (holes for vertical and horizontal mounting)	DD-0000038	6.00			
21.) Screw (4/40x6.0mm)(roundhead)	IA-0000003	0.15			
22.) Wire strap (white)	IH-0000103	1.00			
23.) Bulbs (clear)(6v) (2 bulbs)(285.0mm long wires)(grain of wheat) (cab interior & fire box glow)	CG-0000027	3.00			
24.) Bulb (clear)(6v) (1 bulb)(85.0mm long wires)(blue plug) (headlight)(grain of wheat)	CA-0000036	2.00			
25.) Grommet (black)(rubber)	IH-0000010	0.50			
26.) Bracket (black) (metal)(for headlight bulb)	IH-0000150	1.00			
27.) Contact spring board (w/ 4 contact pads)(18.2x23.5mm)	BH-0000042	2.00			
28.) Smoke unit (8.0x7.0x2.0x3.7mm brass cup) (7.5mm long posts)(Proto-Sound 2.0®)	AA-0000029	50.00			
29.) Screw (4/40x6.0mm)(flathead)	IA-0000038	0.15			
30.) Contact spring board (w/ 3 contact springs)(19.2x28.0mm)	BH-0000043	3.00			
31.) Bracket (smoke unit) (19.6x6.0x29.5mm)(metal)(black)	IH-0000151	3.00			
32.) Throttle control valve (dark gray)	FB-1100101	8.00			
33.) Check valve (gray)	FB-1100102	8.00			

*Requires Exchange
All parts are priced as each



Dreyfuss 4-6-4 Boiler



Dreyfuss 4-6-4 Steam Engine

Drive Block Parts

Name and Number	Part #	\$Price Per Unit	Name and Number	Part #	\$Price Per Unit
1.) Wire strap (white)	IH-0000103	1.00	37.) Screw	IA-0000247	0.15
2.) Motor (Pittman)(9434J434)	BE-0000030	50.00	(M2x7.0mm)(roundhead)(2.0x4.0mm shank)		
3.) Bracket (black) (mounts on Pittman motor)(for tach board)	IH-0000154	3.00	38.) Motion hanger (dark gray)	EA-1100004	15.00
4.) Tach board (w/ 2.2mm spacer between board & optical sensor)	AG-0000041	6.00	39.) Traction tire	DE-0000031	0.75
5.) Motor mount (black) (metal)(for Pittman motors)	BI-0000049	10.00	40.) Screw	IA-0000003	0.15
6.) Screw	IA-0000195	0.15	(4/40x6.0mm)(roundhead)		
7.) Set screw (M3x12.0mm)(no screw head)	IA-0000150	0.15	41.) Screw (nickel) (M3x6.0mm)(roundhead)	IA-0000015	0.15
8.) Screw	IA-0000040	0.15	42.) Insulator (black) (pick-up)(top)(square)	BD-0000026	2.00
9.) Wire nut (yellow)	BI-4500003	0.25	43.) Drive block extension (dark gray)	DF-1100005	10.00
10.) Spring (nickel) (6.5x11.0mm)(w/ 0.4mm thick wire)	IE-0000007	0.50	44.) Screw (6/32x8.0mm)(flat head)	IA-0000177	0.15
11.) Draw bar (black) (68.0mm long)	FB-1100107	3.00	45.) Side rod (blackened) (97.0mm long)(tips on bearings point up)	EC-1110004	4.00
12.) Bolt (black) (8/32x14.0mm)(w/ 5.0x6.0mm shoulder) (1.5x8.0mm slotted head)	IA-0000105	1.00	46.) Side rod (blackened) (97.0mm long)(tips on bearings point up)	EC-1120004	4.00
13.) Insulator (black)(fiber) (13.5x32.0x1.0mm)(cut out for PCB board)	BD-0000065	1.00	47.) Sleeve (nickel) (5.6x6.4x6.3mm)(inner)	ID-0000045	1.00
14.) PCB (10 pin)	AG-0000039	8.00	48.) Sleeve (blackened) (6.7x10.0x3.2mm)(outer)	ID-0000092	1.00
15.) Screw	IA-0000027	0.15	49.) Drive rod (blackened) (right)(106.4mm long end to end)(complete)	EC-1110005	10.00
16.) Screw	IA-0000058	0.15	50.) Drive rod (blackened) (left)(106.4mm long end to end)(complete)	EC-1120005	10.00
17.) Switch (large)	BB-0000006	5.00	51.) Eccentric assembly (right) (blackened)(43.5mm long arm)	ED-1110008	5.00
18.) Bearing (4.0x9.0x4.0mm)	DC-0000001	5.00	52.) Eccentric assembly (left) (blackened)(43.5mm long arm)	ED-1120008	5.00
19.) Worm gear (52.6mm long)	EH-0000010	10.00	53.) Bolt (blackened) (M2.5x13.0mm)(2.5x2.0mm shank) (hex head tapered toward shank)	IA-0000305	1.00
20.) Drive shaft (black) (34.7mm long)(dog bone)	EH-0000004	3.00	54.) Bolt (blackened) (M2.5x7.0mm)(hex head)	IA-0000306	1.00
21.) Flywheel (black) (15.0x30.0mm)(w/ holder for drive shaft)	BE-0000068	5.00	55.) Drive block (dark gray) (3 axle)(silver drivers w/ blackened rims)	DF-1100006	*75.00
22.) Tach tape (black & white) (1.96mm wide stripes)(for 30.0mm flywheel)	BE-0000069	1.00	56.) Pin (black)(lead truck) (4.7x15.5mm)(7.0x1.6mm rounded head) (1 e-clip groove)(0.5mm out from end)	IG-0000036	1.00
23.) Gasket (black) (19.2x36.0x1.6mm)(fiber)	BI-0000023	1.00	57.) Bracket (black) (46.7mm long)(lead truck)	IH-0000155	1.00
24.) Gear box cover (black) (19.3x36.3x1.0mm)(metal)	BI-0000022	2.00	58.) Screw (4/40x6.0mm)(truss head)	IA-0000307	0.15
25.) Wire strap (black)(metal)	IH-0000012	1.00	59.) Spring (nickel) (7.0x12.0mm)(w/ 0.5mm thick wire)	IE-0000060	0.50
26.) Screw	IA-0000011	0.15	60.) Brake shoe assembly (dark gray)(lead truck)	FB-1100109	6.00
27.) Screw (nickel) (6/32x6.0mm)(roundhead)	IA-0000051	0.15	61.) Truck (dark gray) (engine)(2 axle)(lead)	DA-1130007	25.00
28.) Drive rod guide (right) (blackened)(w/ dark gray step)	EA-1110003	4.00	62.) E-clip (black) (3.5x9.0x0.6mm)	IF-0000009	0.15
29.) Drive rod guide (left) (blackened)(w/ dark gray step)	EA-1120004	4.00	63.) Spacer (black) (3.5x15.0x2.5mm)	ID-0000014	1.00
30.) Screw	IA-0000050	0.15	64.) Screw (4/40x4.0mm)(roundhead)	IA-0000021	0.15
31.) Steam chest (dark gray)	EF-1130003	25.00	65.) Brake shoe assembly (right front)(dark gray)(25.8mm long)	FB-1100110	3.00
32.) Compressor (light gray)	FB-1100108	12.00			
33.) Screw	IA-0000023	0.15			
34.) Motion hanger plate (right)(dark gray)	EA-1110004	3.00			
35.) Motion hanger plate (left)(dark gray)	EA-1120005	3.00			
36.) Screw (M2x9.0mm)(roundhead)(2.0x5.5mm shank)	IA-0000280	0.15			

*Requires Exchange
All parts are priced as each



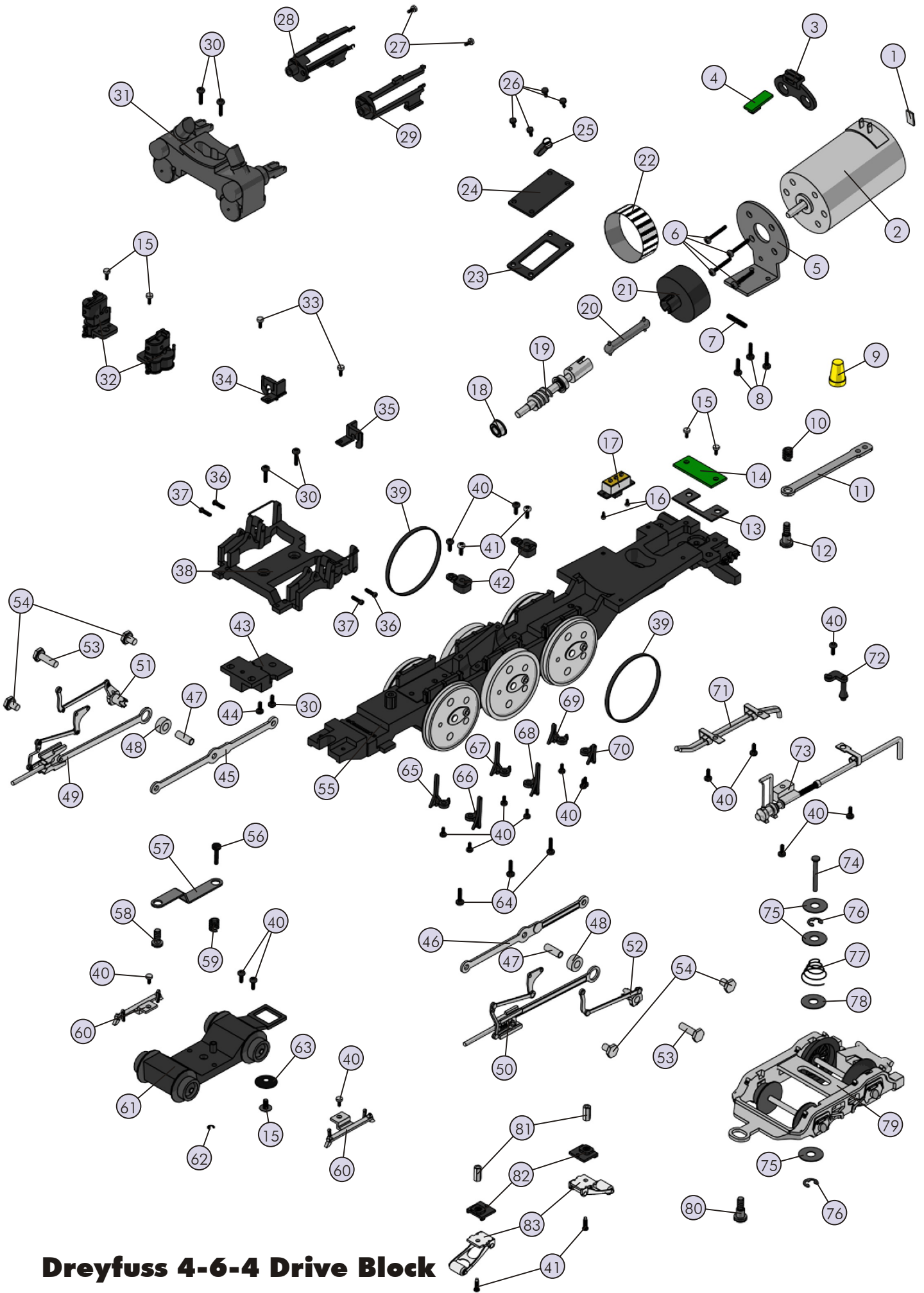
Dreyfuss 4-6-4 Steam Engine

Drive Block Parts

Name and Number	Part #	\$Price Per Unit
66.) Brake shoe assembly (left front)(dark gray)(25.8mm long)	FB-1100111	3.00
67.) Brake shoe assembly (right middle)(dark gray)(25.8mm long)	FB-1100112	3.00
68.) Brake shoe assembly (left middle)(dark gray)(25.8mm long)	FB-1100113	3.00
69.) Brake shoe assembly (right rear)(dark gray)(16.5mm long)	FB-1100114	3.00
70.) Brake shoe assembly (left rear)(dark gray)(16.5mm long)	FB-1100115	3.00
71.) Water pipe (dark gray) (under cab)(right rear)	FB-1100116	8.00
72.) Dump pipe (dark gray) (under cab)(left rear)	FB-1100117	4.00
73.) Boiler feed pump (w/ pipe) (dark gray)(under cab)(left rear)	FB-1100118	10.00
74.) Pin (black) (5.0x21.0mm)(w/ 2 e-clip grooves)	IG-0000011	0.50
75.) Washer (black) (5.0x12.0x0.6mm)	ID-0000053	0.15
76.) E-clip (black) (3.5x9.0x0.6mm)	IF-0000009	0.15
77.) Spring (nickel) (7.5x13.0x14.0mm)(w/ 0.7mm thick wire)	IE-0000018	0.50
78.) Washer (black) (5.0x15.0x0.5mm)	ID-0000013	0.15
79.) Truck (dark gray) (2 axle)(trailing)(engine)	DA-1140006	30.00
80.) Bolt (black) (6/32x14.0mm)(5.0x6.5mm oversized shank) (1.5x10.0mm slotted head)	IA-0000308	1.00
81.) Nut (nickel) (2.5x5.0x10.0mm)	IC-0000001	0.50
82.) Insulator (black) (pick-up)(bottom)(square)	BD-0000024	2.00
83.) Pick-up (8.0x11.0mm roller w/ tapered ends)(28.0mm long)	BD-0000043	5.00

*Requires Exchange
All parts are priced as each





Dreyfuss 4-6-4 Drive Block

Dreyfuss 4-6-4 Tender

Tender Parts

Name and Number	Part #	\$Price Per Unit	Name and Number	Part #	\$Price Per Unit
1.) Coal bunker door (light gray)(w/ hinges)	GA-1100026	8.00	33.) Truck (dark gray) (3 axle)(leading)(tender)	DA-1130008	30.00
2.) Screw (M2x4.0mm)(roundhead)	IA-0000058	0.15	34.) Screw (6/32x6.0mm)(washer head)	IA-0000214	0.15
3.) Handrail (light gray) (27.5mm long)	GA-1100027	1.00	35.) Water scoop (dark gray)	GA-1100032	10.00
4.) Shell (tender) (New York Central)(light & dark gray, silver, blue)	GA-1100028	*80.00	36.) Brake cylinder (dark gray)	GA-1100033	10.00
5.) Handrail (light gray) (39.5mm long)	GA-1100029	1.00	37.) Screw (6/32x8.0mm)(flat head)	IA-0000177	0.15
6.) Wire harness (10 pin) (w/ patch board)(215.0mm long wires) (30.5x33.5mm patch board)(w/ red 3 pin plug) (w/ white, black, blue, green, yellow 2 pin plugs)	BC-0000080	12.00	38.) Front steps (light gray)	GA-1100034	15.00
7.) Bracket (black) (battery)(horizontal side mount)(plastic)	IH-0000116	3.00	39.) Truck side (dark gray) (tender)(3 axle)(w/ Bronze axle bushings)	DB-1100001	7.00
8.) Chassis (black)	GB-1100005	*15.00			
9.) Battery	BG-4000001	9.95			
10.) Battery leads (90.0mm long wires)(w/ 2 pin white plug)	BC-0000081	3.00			
11.) Screw (M3x4.0mm)(roundhead)	IA-0000010	0.15			
12.) Spacer (black) (3.0x6.0x4.0mm)(plastic)	ID-0000071	0.15			
13.) Volume pot (small) (blue w/ green board)	BI-0000040	5.00			
14.) Screw (M3x8.0mm)(roundhead)	IA-0000035	0.15			
15.) Bracket (black) (30.0x16.5x16.5mm)(metal) (threaded hole for 4/40 screw on one side)	IH-0000156	2.00			
16.) Screw (4/40x6.0mm)(roundhead)	IA-0000003	0.15			
17.) Screw (4/40x4.0mm)(roundhead)	IA-0000021	0.15			
18.) Speaker (Cuistack)(GF0501)(16 ohms)(0.25 watt)	BF-0000007	8.95			
19.) Bracket (black) (speaker)(9.0x5.0x9.5mm)(metal) (rounded corners by mounting hole)	IH-0000157	1.00			
20.) Screw (6/32x8.0mm)(roundhead)	IA-0000050	0.15			
21.) Ladder (light gray)	GA-1100030	5.00			
22.) Water hatch assembly insert (light gray)	GA-1100031	*20.00			
23.) Bracket (black) (for back-up lights)(metal)	IH-0000158	2.00			
24.) Grommet (black) (4.5x5.0mm)(rubber)	IH-0000010	0.50			
25.) Lens (clear) (back-up light)(3.8x3.2x6.0mm)	FA-1140003	2.00			
26.) Bulb (clear)(1)(6v) (100.0mm long wires)(green plug)(back-up light)	CF-0000008	2.00			
27.) T-bar (4.0x20.0mm)	IG-0000001	0.50			
28.) Proto-Coupler 2.0® (51.0mm long)	DD-0000032	10.00			
29.) Spring (nickel) (6.5x14.0mm)(w/ 0.5mm thick wire)	IE-0000022	0.50			
30.) Washer (black) (4.5x10.0x0.6mm)	ID-0000041	0.15			
31.) E-clip (black) (3.0x8.0x0.5mm)	IF-0000002	0.15			
32.) Truck (dark gray) (3 axle)(trailing)(tender)	DA-1140007	30.00			

*Requires Exchange
All parts are priced as each



Dreyfuss 4-6-4 Tender

