



20-3030-1

# DM&IR Yellowstone 2-8-8-4



REV.020201

# DM&IR 2-8-8-4 Steam Engine

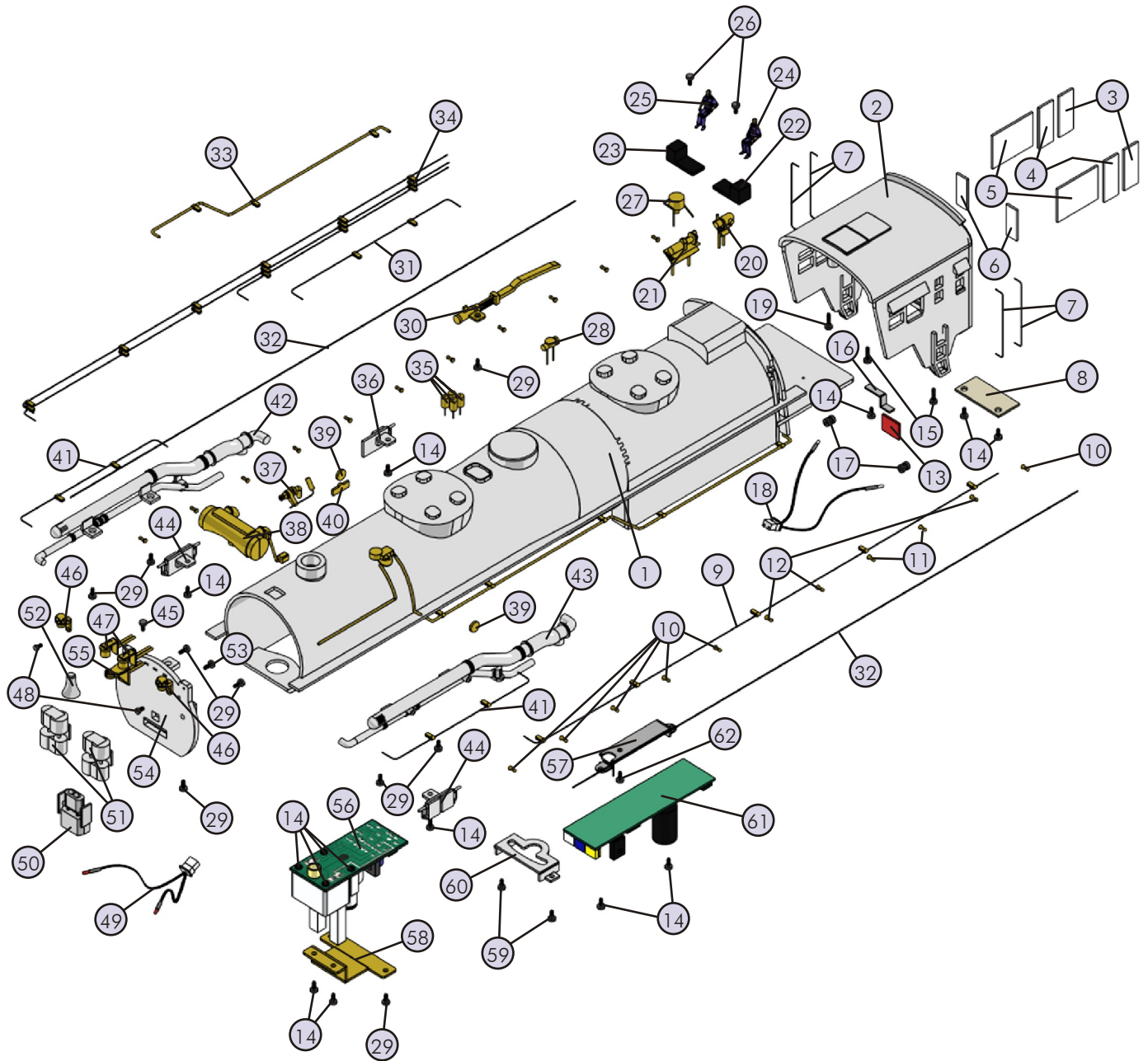
## Boiler Parts

Name and Number	Part #	\$Price Per Unit	Name and Number	Part #	\$Price Per Unit
1.) Boiler (Russian Iron & black) ( DM&IR )( #227 )	FB-1100021	*150.00	46.) Marker light housing ( black )	FB-1150008	6.00
2.) Cab ( Russian Iron & black ) ( DM&IR )( #227 )	FB-1100022	*30.00	47.) Filter ( black )	FB-1150009	6.00
3.) Window lens ( clear )( cab )	FA-1100002	1.00	48.) Screw ( M2x5.0mm )( roundhead )	IA-0000076	0.15
4.) Window lens ( clear )( cab )	FA-1100003	1.00	49.) L.E.D.'s ( red ) ( 2 )( 6v )( 140.0mm long wires w/ yellow plug )	CC-0000002	3.00
5.) Window lens ( clear )( cab )	FA-1100004	1.00	50.) Compressor ( black )	FB-1100046	10.00
6.) Window lens ( clear )( cab )	FA-1100005	0.50	51.) Compressor ( black )	FB-1150010	12.00
7.) Handrail ( black ) ( cab )( 48.0mm long )	FB-1100023	2.00	52.) Bell ( brass )	FB-1100018	6.00
8.) Contact spring board	BH-0000014	2.00	53.) Screw ( 4/40x6.0mm )( washer head )	IA-0000028	0.15
9.) Air line ( gray )( left )	FB-1100024	6.00	54.) Boiler front ( black )	FB-1130010	10.00
10.) Stanchion ( gray ) ( 6.0mm long )	FB-1100025	2.00	55.) Bracket ( black )( for bell )	FB-1130011	5.00
11.) Stanchion ( gray ) ( 4.0mm long )	FB-1100026	2.00	56.) Smoke unit	AA-0000008	50.00
12.) Stanchion ( gray ) ( 5.0mm long )	FB-1100027	2.00	57.) Bracket ( black ) ( CV board )	IH-0000050	2.00
13.) Lens ( red )( firebox )	FA-1100006	2.00	58.) Bracket ( black ) ( smoke unit )	IH-0000058	3.00
14.) Screw ( 4/40x6.0mm )( roundhead )	IA-0000003	0.15	59.) Screw ( 4/40x8.0mm )( roundhead )	IA-0000011	0.15
15.) Screw ( 6/32x10.0mm )( roundhead )	IA-0000040	0.15	60.) Bracket ( black ) ( front drive block to boiler )	IH-0000059	2.00
16.) Bracket ( black ) ( firebox light )	IH-0000057	2.00	61.) CV board ( has yellow, black & white 2 pin female plugs )	AG-0000012	20.00
17.) Grommet ( black ) ( 4.5x5.0mm )( rubber )	IH-0000010	0.15	62.) Screw ( M3x6.0mm )( roundhead )	IA-0000016	0.15
18.) Bulbs ( clear ) ( 6v )( 250.0mm long wires )( fire box and cab light ) ( grain of wheat )	CG-0000010	3.00			
19.) Screw ( 6/32x6.0mm )( washer head )	IA-0000214	0.15			
20.) Steam generator ( black )	FB-1100028	6.00			
21.) Steam generator ( black ) ( large )	FB-1100029	10.00			
22.) Stand ( black )( fireman )	FI-0000014	1.00			
23.) Stand ( black )( engineer )	FI-0000015	1.00			
24.) Fireman	FI-0000009	5.00			
25.) Engineer	FI-0000001	5.00			
26.) Screw ( 6/32x6.0mm )( roundhead )	IA-0000027	0.15			
27.) Blow down muffler ( black )	FB-1100030	6.00			
28.) Injector ( black )	FB-1100031	6.00			
29.) Screw ( 6/32x8.0mm )( roundhead )	IA-0000050	0.15			
30.) Reverser ( black )	FB-1100032	12.00			
31.) Air line ( Russian Iron )	FB-1100033	6.00			
32.) Handrail ( nickel ) ( 370.0mm long )( boiler )	FB-1150007	4.00			
33.) Feed water pipe ( black )	FB-1100034	8.00			
34.) Air lines ( black )	FB-1100035	12.00			
35.) Pop-off valves ( brass )	FB-1100036	4.00			
36.) Box ( black )	FB-1100037	8.00			
37.) Whistle ( black/brass )	FB-1100038	10.00			
38.) Feed water heater ( black )	FB-1100039	15.00			
39.) Builder's plate ( round )	FB-1100040	3.00			
40.) Super heater plate	FB-1100041	3.00			
41.) Air line ( black )	FB-1100042	6.00			
42.) Steam pipe ( black )( right )	FB-1100043	15.00			
43.) Steam pipe ( black )( left )	FB-1100044	15.00			
44.) Radiator ( black )	FB-1100045	8.00			
45.) Screw ( M2.5x5.0mm )( roundhead )	IA-0000044	0.15			

\*Requires Exchange  
All parts are priced as each



# DM&IR 2-8-8-4 Steam Engine



# DM&IR 2-8-8-4 Steam Engine

## Drive Block Parts

Name and Number	Part #	\$Price Per Unit	Name and Number	Part #	\$Price Per Unit
1.) Side rod ( nickel ) ( 121.0mm long )( 4 bolt holes )	EC-1150002	4.00	35.) Eccentric rod guide ( black ) ( left )( has large box on top )	ED-1120004	3.00
2.) Bolt ( M2.5x7.5mm )( hex head )	IA-0000106	1.00	36.) Eccentric rod guide ( black ) ( right )	ED-1110004	3.00
3.) Reverse linkage ( black ) ( die-cast )	FB-1100047	8.00	37.) Drive rod guide ( nickel ) ( 39.0mm long )	EA-1150001	3.00
4.) Screw ( 6/32x8.0mm )( roundhead )	IA-0000050	0.15	38.) Screw ( 6/32x6.0mm )( roundhead )( nickel )	IA-0000051	0.15
5.) Reverse linkage ( nickel )	FB-1100048	2.00	39.) CV board ( small )( for headlight )	AG-0000013	10.00
6.) Reverse linkage rod ( black ) ( 57.0mm long )	FB-1100049	2.00	40.) Steam pipe ( black ) ( has hole for mounting and for spring )	FB-1100051	6.00
7.) Sleeve ( nickel ) ( 5.6x6.4x6.3mm )( inner )	ID-0000045	1.00	41.) Bolt ( black ) ( 6/32x13.5mm )( 4.4x6.0mm shank ) ( 1.6x8.0mm slotted head )	IA-0000078	1.00
8.) Sleeve ( nickel ) ( 6.7x10.0x2.5mm )( outer )	ID-0000044	1.00	42.) Handrails ( black ) ( mounts on pilot )	FB-1100052	6.00
9.) Bolt ( nickel ) ( M2.5x13.5mm )( hex head )	IA-0000065	1.00	43.) Pilot deck ( black )	FB-1100053	12.00
10.) Eccentric assembly ( nickel ) ( left )( 50.0mm long rod )	ED-1120003	5.00	44.) Light / # board housing ( black )( #227 )	FB-1100019	10.00
11.) Eccentric assembly ( nickel ) ( right )( 50.0mm long rod )	ED-1110003	5.00	45.) Lens ( clear )( headlight )	FA-1100001	2.00
12.) Screw ( nickel ) ( M2x4.0mm )( w/ 2.0mm oversized shank )	IA-0000104	0.50	46.) Steam chest ( black ) ( for front & rear drive blocks )	EF-1100001	25.00
13.) Screw ( nickel ) ( M2x9.0mm )( roundhead ) ( w/6.0mm oversized shank )	IA-0000077	0.50	47.) Screw ( M2.5x4.0mm )( roundhead )	IA-0000023	0.15
14.) Drive rod ( nickel ) ( left )( complete )	EC-1120002	10.00	48.) Bulb ( clear )( 6v ) ( 35.0mm long wires w/ black plug )( grain of wheat )	CA-0000009	2.00
15.) Drive rod ( nickel ) ( right )( complete )	EC-1110002	10.00	49.) Screw ( 6/32x6.0mm )( roundhead )	IA-0000027	0.15
16.) Washer ( black ) ( 13.0x2.0mm )( w/ slot )	ID-0000046	0.15	50.) Bracket ( black )( lead truck )	IH-0000061	1.00
17.) Spring ( nickel ) ( 9.0x11.0mm )( w/ 0.6mm thick wire )	IE-0000064	0.50	51.) Pin ( black ) ( 5.0x19.0mm )( w/ 1 e-clip groove )	IG-0000010	0.50
18.) Screw ( 4/40x8.0mm )( roundhead )	IA-0000011	0.15	52.) Spring ( nickel ) ( 6.5x14.0mm )( w/ 0.5mm thick wire )	IE-0000022	0.50
19.) Screw ( 4/40x6.0mm )( roundhead )	IA-0000003	0.15	53.) Screw ( 4/40x6.0mm )( washer head )	IA-0000028	0.15
20.) Screw ( nickel ) ( M3x6.0mm )( roundhead )	IA-0000015	0.15	54.) Pilot ( black )	FB-1130012	20.00
21.) Insulator ( black ) ( top )( square )( pick-up )	BD-0000026	2.00	55.) Coupler ( black ) ( non-operating )	DD-0000006	6.00
22.) Cover ( black )( plastic )	IH-0000060	2.00	56.) Bolt ( black ) ( M2.5x6.0mm )( slotted head )( w/undersized shank )	IA-0000061	1.00
23.) Spring ( black ) ( 3.5x19.0mm )( w/ 0.3mm thick wire )	IE-0000021	0.50	57.) Coupler ( black )( scale )	DD-0000005	6.00
24.) Reverse rod guide ( black )	FB-1100050	6.00	58.) Uncoupling lever ( nickel ) ( complete )	FB-1130013	4.00
25.) Gear box cover ( black ) ( w/ hook )	BI-0000024	2.00	59.) Truck ( black ) ( lead )( 1 axle )	DA-1130004	20.00
26.) Gasket ( black ) ( for gear box cover )( 19.2x36.0x1.6mm )( fiber )	BI-0000023	1.00	60.) E-clip ( black ) ( 3.5x9.0x0.6mm )	IF-0000009	0.15
27.) Worm gear assembly (front)	EH-0000006	10.00	61.) Screw ( 6/32x6.0mm )( washer head )	IA-0000214	0.15
28.) Traction tire	DE-0000025	0.75	62.) Nut ( nickel ) ( 2.5x5.0x10.0mm )	IC-0000005	0.50
29.) Drive block ( black ) ( front )( 4 axle )	DF-1100002	*75.00	63.) Insulator ( black ) ( pick-up )( bottom )( flat )( square )	BD-0000024	2.00
30.) Brake shoe assembly ( black )( short )( left )	FB-1120011	3.00	64.) Pick-up ( 8.0x11.0mm roller )( 28.0mm long )	BD-0000038	5.00
31.) Brake shoe assembly ( black )( long )( left )	FB-1120010	3.00	65.) Screw ( nickel ) ( M3x6.0mm )( roundhead )	IA-0000015	0.15
32.) Brake shoe assembly ( black )( short )( right )	FB-1110011	3.00	66.) Gasket ( black ) ( for gear box cover )( 19.2x36.0x1.6mm )( fiber )	BI-0000023	1.00
33.) Brake shoe assembly ( black )( long )( right )	FB-1110012	3.00			
34.) Motion hanger ( black )	EA-1100002	12.00			

\*Requires Exchange  
All parts are priced as each



# DM&IR 2-8-8-4 Steam Engine

## Drive Block Parts

Name and Number	Part #	\$Price Per Unit
67.) Gear box cover ( black ) ( 19.3x36.3x1.0mm )( metal )	BI-0000022	2.00
68.) Fly wheel ( brass ) ( for Pittman motors )( 13.0x32.0mm )	BE-0000031	5.00
69.) Screw ( 8/32x7.0mm )( roundhead )	IA-0000063	0.15
70.) Motor mount ( black ) ( for Pittman motors )	BI-0000021	10.00
71.) Motor ( Pittman, 9434J434 )	BE-0000030	50.00
72.) Drive shaft ( black ) ( plastic )( 34.7mm long )	EH-0000004	3.00
73.) Switch ( large )	BB-0000010	5.00
74.) Screw ( M2x4.0mm )( roundhead )	IA-0000058	0.15
75.) Worm gear assembly ( rear )	EH-0000007	10.00
76.) PCB ( 4 pin female plug w/ springs )( 14.5x32.0mm )	BB-0000012	8.00
77.) Drive block ( black ) ( 4 axle )( rear )	DF-1100003	*75.00
78.) Pin ( black ) ( 5.0x21.0mm )( w/ 2 e-clip grooves )	IG-0000011	0.50
79.) Washer ( black ) ( 5.0x12.0x0.8mm )( metal )	ID-0000012	0.15
80.) Spring ( nickel ) ( 7.5x13.0x11.0mm )	IE-0000013	0.50
81.) Washer ( black ) ( 5.0x15.0x0.5mm )	ID-0000013	0.15
82.) E-clip ( black ) ( 3.5x9.0x0.6mm )	IF-0000009	0.15
83.) Screw ( 4/40x6.0mm )( roundhead )	IA-0000003	0.15
84.) Screw ( 6/32x6.0mm )( washer head )	IA-0000214	0.15
85.) Screw ( 6/32x10.0mm )( roundhead )	IA-0000040	0.15
86.) Draw bar pin ( nickel ) ( M3x22.0mm )	IG-0000012	2.00
87.) Nut ( nickel ) ( 2.4x5.5x2.5mm )	IC-0000009	0.50
88.) Washer ( black ) ( fiber )( 3.0x6.0x0.4mm )	ID-0000040	0.15
89.) Screw ( 4/40x4.0mm )( roundhead )	IA-0000021	0.15
90.) Bolt ( black ) ( 8/32x15.5mm )( w/ 6.3x8.0mm shank ) ( 2.0x8.0mm slotted head )	IA-0000079	0.15
91.) Rod ( black ) ( 21.0mm long )	FB-1100054	2.00
92.) Truck ( black ) ( boiler )( 2 axle )( rear )	DA-1140004	25.00
93.) Eccentric rod guide ( black ) ( left )( has small box on top )	ED-1120010	3.00

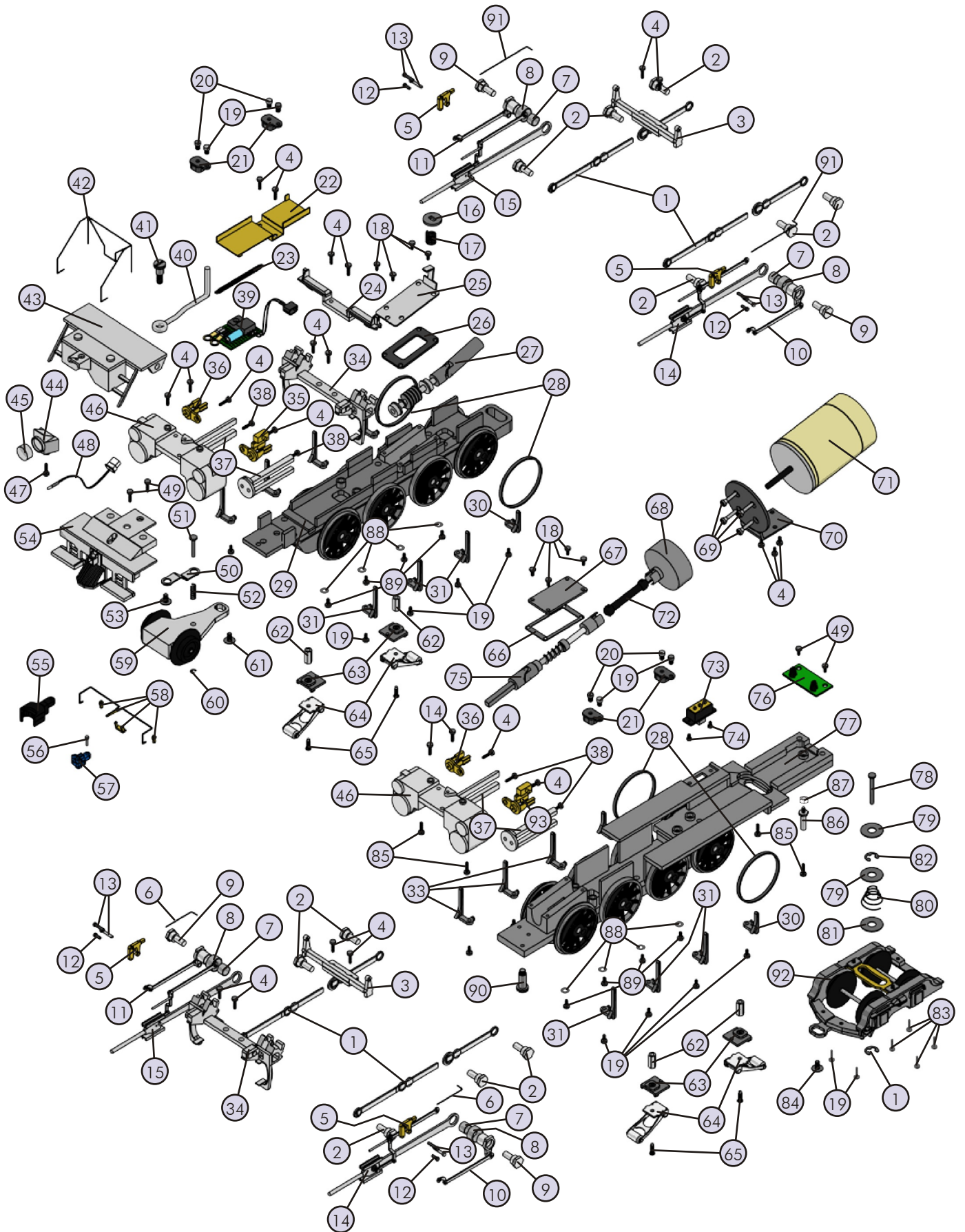
\*Requires Exchange

All parts are priced as each





# DM&IR 2-8-8-4 Steam Engine



# DM&IR 2-8-8-4 Steam Engine

## Tender Parts

Name and Number	Part #	\$Price Per Unit	Name and Number	Part #	\$Price Per Unit
1.) Shell ( black ) ( tender )( Duluth, Missabe & Iron Range )( # 227 )	GA-1100005	*100.00	36.) Nut ( 6.0x10.0x2.0mm )	IC-0000007	0.50
2.) Ladder ( black )( right )	GA-1110001	4.00	37.) Screw ( M3x8.0mm )( roundhead )( self-drilling )	IA-0000072	0.15
3.) Ladder ( black )( left )	GA-1120001	4.00	38.) Bracket ( black ) ( speaker )( 9.0x9.5mm )	IH-0000044	1.00
4.) Bell ( brass )	FB-1100018	6.00	39.) Speaker ( Star, PR-05004-08 )( 8 ohms )( 0.2 watt )	BF-4500008	8.95
5.) Bell bracket ( black )	GA-1100006	4.00	40.) Wire harness ( black ) ( tender )( 305.0mm long wires )( w/ 4 pin male plug )	BC-0000007	8.00
6.) Lens ( clear )	FA-1100001	2.00	41.) Screw ( 6/32x10.0mm )( roundhead )	IA-0000040	0.15
7.) Light / # board housing ( black )( #227 )	FB-1100019	10.00	42.) Chassis ( black )( tender )	GB-1100002	*15.00
8.) Handrail ( black ) ( 106.5mm long )	GA-1100007	2.00	43.) Spring ( nickel ) ( 7.5x13.0x11.0mm )	IE-0000013	0.50
9.) Stanchion ( black ) ( 6.0mm high )	GA-1100008	1.00	44.) Washer ( black ) ( 5.5x15.0x0.6mm )	ID-0000039	0.15
10.) Wire strap ( black )( metal )	IH-0000012	1.00	45.) Draw bar ( nickel ) ( 94.0mm long )( 5.0mm hole for mounting ) ( 2 4.2mm holes for coupling )( 1 7.0mm step )	FB-1100020	3.00
11.) Screw ( 4/40x8.0mm )( roundhead )	IA-0000011	0.15	46.) Bolt ( black ) ( M3x13.0mm )( w/ 7.0mm oversized shank ) ( oversized slotted head )	IA-0000075	1.00
12.) Bulb ( clear )( 1.5v ) ( 210.0mm long wires w/ green plug ) ( grain of wheat )( back-up light )	CF-0000003	2.00	47.) Truck ( black ) ( 2 axle )( lead )( tender )( stamped metal bolster )	DA-1130003	*30.00
13.) Tender shell front ( black ) ( Duluth, Massabe & Iron Range )( # 227 )	GA-1100009	*20.00	48.) Screw ( M2.5x5.0mm )( roundhead )	IA-0000044	0.15
14.) Battery leads ( 145.0mm long wires )	BC-0000003	3.00	49.) Screw ( 4/40x6.0mm )( roundhead )	IA-0000003	0.15
15.) Battery	BG-4000001	9.95	50.) Screw ( M3x8.0mm )( roundhead )	IA-0000035	0.15
16.) Proto-Sound Chip®	N/A	19.95	51.) Screw ( 4/40x6.0mm )( roundhead )	IA-0000003	0.15
17.) Board ( Proto-Sound® ) ( top )	AE-4500001	*100.00	52.) Truck side ( black ) ( left )( for 5 axle centipede truck )	DB-1120001	15.00
18.) Board ( Proto-Sound® ) ( bottom )	AD-4500001	*60.00	53.) Truck side ( black ) ( right )( for 5 axle centipede truck )	DB-1110001	15.00
19.) Clip ( black ) ( Proto-Sound® board )( top )( plastic )	IF-0000006	1.00	54.) Truck ( black )( 5 axle )	DA-1140003	15.00
20.) Clip ( black ) ( Proto-Sound® board )( bottom )( plastic )	IF-0000007	1.00	55.) E-clip ( black ) ( 3.0x8.0x0.5mm )	IF-0000002	0.15
21.) Bracket ( brass ) ( Proto-Sound® board )	IH-0000043	2.00	56.) Washer ( black ) ( 5.0x10.0x1.0mm )	ID-0000026	0.15
22.) Screw ( 4/40x4.0mm )( roundhead )	IA-0000021	0.15	57.) Spring ( nickel ) ( 6.5x12.0mm )( 0.6mm thick wire )	IE-0000024	0.50
23.) Insulator ( clear ) ( 13.0x19.0x0.1mm )( single hole )	ID-0000024	1.00	58.) Spacer ( black ) ( 4.5x7.0x6.0mm )( plastic )	ID-0000043	1.00
24.) Insulator washer ( white ) ( 6.0x4.0x2.5mm )( plastic )	ID-0000033	0.15	59.) Proto-Coupler® ( 51.5mm long )	DD-0000001	10.00
25.) Screw ( 4/40x6.0mm )( roundhead )	IA-0000003	0.15	60.) T-bar ( black ) ( 4.0x20.0mm )( plastic )	IG-0000001	0.50
26.) Heat sink ( Aluminum ) ( 3.0x20.0x10.0mm )	AI-4500010	2.00	61.) Screw ( M3x8.0mm )( roundhead )	IA-0000035	0.15
27.) Screw ( 4/40x25.0mm )( roundhead )	IA-0000056	0.15	62.) Bolt ( black ) ( 4/40x13.0mm )( w/ 4.8x7.5mm shank ) ( 2.0x8.0mm slotted head )	IA-0000093	1.00
28.) Bracket ( black ) ( battery )( vertical mount )( plastic )	IH-0000042	3.00			
29.) Screw ( 4/40x4.0mm )( roundhead )	IA-0000021	0.15			
30.) Washer ( black ) ( 7.0x12.0x0.5mm )	ID-0000034	0.15			
31.) Bracket ( black ) ( volume pot )( plastic )( u-shaped )	IH-0000023	2.00			
32.) Volume pot ( B10K SW )( w/ 200.0mm long wires )	BI-0000017	5.00			
33.) Speaker cone ( 49.0x40.0mm )( cardboard )	BF-0000004	2.00			
34.) Screw ( 6/32x6.0mm )( roundhead )	IA-0000027	0.15			
35.) Screw ( M2.5x3.0mm )( roundhead )	IA-0000022	0.15			

\*Requires Exchange  
All parts are priced as each



# DM&IR 2-8-8-4 Steam Engine

