

**RAIL KING**  
By M.T.H. Electric Trains

30-4036-1a

N&W J



GL072301

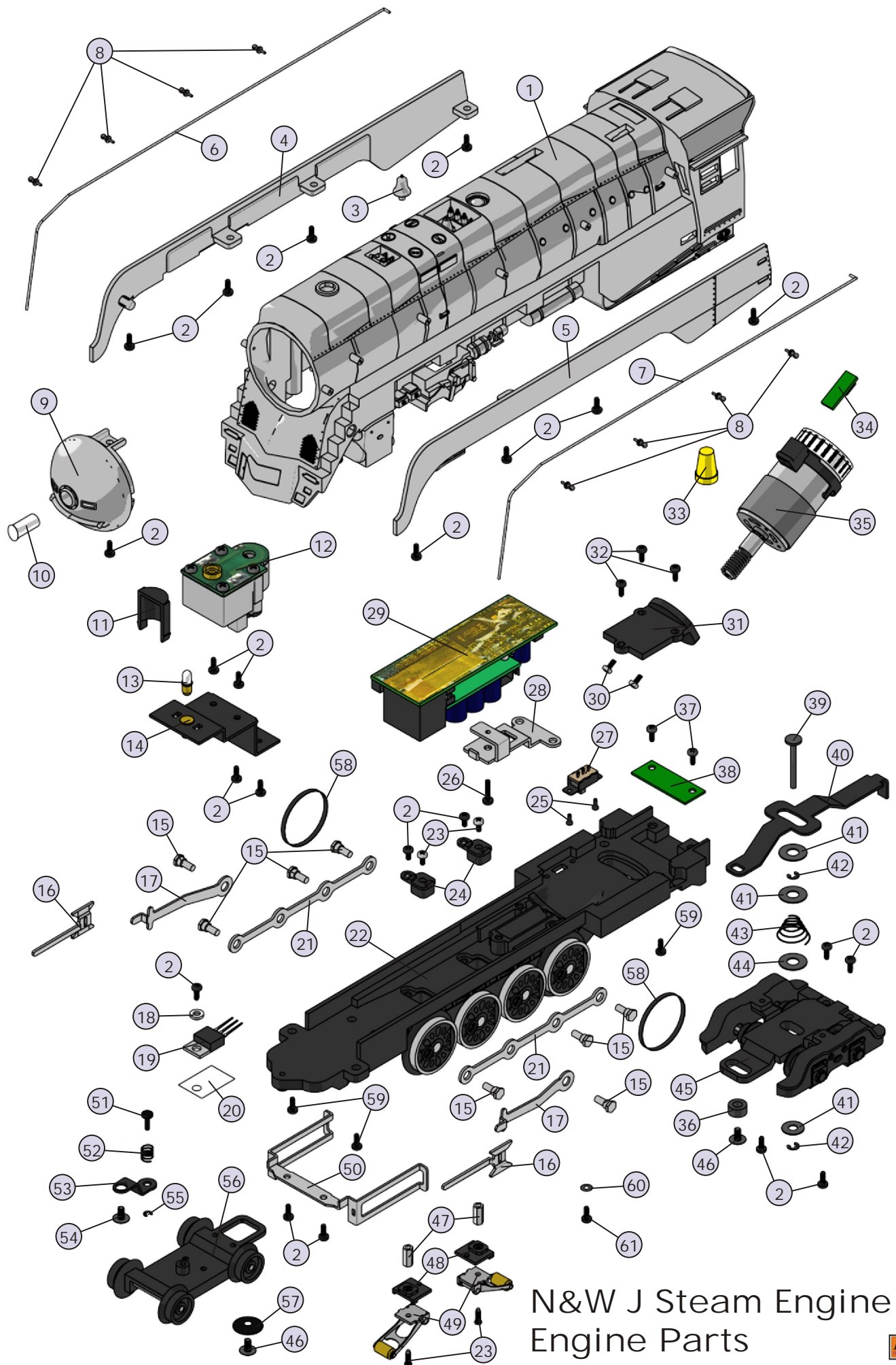


# N&W J Steam Engine

## Engine Parts

Name and Number	Part #	\$Price Per Unit	Name and Number	Part #	\$Price Per Unit
1.) Shell ( Tuscan, gold, black ) ( boiler )( metal )( N&W )( # 612 )	FB-1200179	*100.00	38.) PC board ( green ) ( w/ 10 pin female plug )	AG-0000039	8.00
2.) Screw ( 4/40x6.0mm )( roundhead )	IA-0000003	0.15	39.) Pin ( 5.0x25.3mm ) ( 1.5x8.0mm flathead )( 2 e-clip grooves )	IG-0000033	0.50
3.) Bell ( nickel )	FB-1200002	4.00	40.) Draw bar ( 92.5x10.0mm )	FB-1200181	3.00
4.) Side panel ( Tuscan w/ gold trim ) ( right )( N&W )( # 612 )	FB-1210036	*15.00	41.) Washer ( 5.5x10.0x0.5mm )	ID-0000075	0.15
5.) Side panel ( Tuscan w/ gold trim ) ( left )( N&W )( # 612 )	FB-1220043	*15.00	42.) E-clip ( 3.5x9.0x0.6mm )	IF-0000009	0.15
6.) Handrail ( nickel )( right )( boiler )	FB-1210037	2.00	43.) Spring ( conical ) ( 6.5x12.5x13.0mm )( 0.6mm thick wire )	IE-0000062	0.50
7.) Handrail ( nickel )( left )( boiler )	FB-1220044	2.00	44.) Washer ( 5.5x15.0x1.0mm )	ID-0000095	0.15
8.) Stanchion ( black ) ( plastic )( 3.0mm long )	FB-1200242	0.50	45.) Truck ( black ) ( 2 axles )( trailing )( boiler )	DA-1240032	25.00
9.) Boiler front ( Tuscan ) ( N&W )( # 612 )	FB-1200180	*12.00	46.) Screw ( 6/32x6.0mm )( washer head )	IA-0000214	0.15
10.) Lens ( clear )( headlight )	FA-1230022	2.00	47.) Nut ( nickel )( 2.5x5.0x10.0mm )	IC-0000005	0.50
11.) Light reflector ( black )( plastic )	CI-0000024	3.00	48.) Insulator ( black ) ( pick-up )( bottom )( plastic )	BD-0000001	2.00
12.) Smoke unit ( Proto-Sound® 2.0 )	AA-0000029	* 50.00	49.) Pick-up ( 8.0x11.0mm roller )( 28.0mm long )	BD-0000048	5.00
13.) Bulb ( clear )( headlight ) ( 6v )( small globe )( screw base )	CA-0000038	1.00	50.) Crosshead guide assembly	EA-1200013	6.00
14.) Bracket ( black ) ( headlight/smoke unit )( metal )	IH-0000085	3.00	51.) Pin ( black )( 3.0x15.0mm ) ( 1.3x6.0mm roundhead )( 1 e-clip groove )	IG-0000003	0.50
15.) Bolt ( nickel ) ( M3x8.0mm )( hex head )	IA-0000087	1.00	52.) Spring ( nickel ) ( 6.5x9.0mm )( 0.5mm thick wire )	IE-0000009	0.50
16.) Crosshead ( nickel )( 38.8mm long )	EC-1250016	5.00	53.) Bracket ( black )( lead truck ) ( 32.0x7.0mm )( 2 bends, 2 holes )	IH-1230006	1.00
17.) Drive rod ( nickel ) ( 53.3mm long )	EC-1250022	5.00	54.) Screw ( 4/40x6.0mm )( washer head )	IA-0000028	0.15
18.) Insulator washer ( white ) ( 6.0x4.0x2.5mm )( plastic )	ID-0000033	0.15	55.) E-clip ( 2.5x6.0x0.5mm )	IF-0000004	0.15
19.) Voltage regulator ( LM2937ET )	AG-0000032	3.00	56.) Truck ( black ) ( lead )( 2 axle )( boiler )	DA-1230022	20.00
20.) Insulator ( clear ) ( 13.0x19.0x0.1mm )( single hole )	ID-0000024	0.15	57.) Spacer ( cup ) ( 3.5x15.0x2.5mm )	ID-0000014	1.00
21.) Side rod ( nickel ) ( 87.5x1.0mm )( 4 bolt holes )	EC-1250023	2.00	58.) Traction tire	DE-0000022	0.75
22.) Drive block ( black )( 4 axle )	DF-1200027	*75.00	59.) Screw ( 6/32x8.0mm )( roundhead )	IA-0000050	0.15
23.) Screw ( nickel ) ( M3x6.0mm )( roundhead )	IA-0000015	0.15	60.) Washer ( black ) ( 3.0x6.0x0.4mm )( fiber )	ID-0000040	0.15
24.) Insulator ( black ) ( top )( square )( pick-up )	BD-0000026	2.00	61.) Screw ( 6/32x4.0mm )( roundhead )	IA-0000060	0.15
25.) Screw ( M2x4.0mm )( roundhead )	IA-0000058	0.15	NS.) Wire harness ( 10 pin female PC Board )	BC-1200013	15.00
26.) Screw ( 4/40x14.0mm )( roundhead )	IA-0000122	0.15	NS.) Wire harness ( 7 pin male plug )	BC-1200014	8.00
27.) Switch ( small )	BB-0000009	5.00	NS.) Wire harness ( 5 pin male plug )	BC-1200015	5.00
28.) Bracket ( Aluminum ) ( for Proto-Sound® 2.0 boards )	IH-0000170	3.00	NS.) Wire harness ( 4 pin male plug )	BC-1200016	4.00
29.) Boards ( Proto-Sound® 2.0 )	AE-0000001	*200.00			
30.) Screw ( yellow Zinc ) ( M2.5x6.0mm )( roundhead w/lock washer )	IA-0000089	0.15			
31.) Motor mount ( black )	BI-0000034	15.00			
32.) Screw ( 6/32x10.0mm )( roundhead )	IA-0000040	0.15			
33.) Wire nut ( yellow )	BI-4500003	0.25			
34.) Tach board	AG-0000033	6.00			
35.) Motor ( RS-365SH ) ( 8.0x21.0mm worm gear )( 13.0mm long threads ) ( 9.0x30.0mm white flywheel w/ black stripes ) ( tach board mounting strap )	BE-0000076	25.00			
36.) Spacer ( black ) ( 6.0x9.0x3.8mm )( metal )	ID-0000103	1.00			
37.) Screw ( 6/32x6.0mm )( roundhead )	IA-0000027	0.15			

\*Requires Exchange  
All parts are priced as each



N&W J Steam Engine  
Engine Parts

# N&W J Steam Engine Tender

## Tender Parts

Name and Number	Part #	\$Price Per Unit
1.) Shell ( Tuscan, gold, black ) ( tender )( Norfolk and Western )( plastic )	GA-1200067	*40.00
2.) Weight ( black ) ( metal )( 34.4x39.3x19.8mm ) ( w/ 2 holes tapped for 4/40 screws )	II-0000015	5.00
3.) Wire harness ( black male 10 pin plug )	BC-1200105	12.00
4.) Screw ( 4/40x6.0mm )( roundhead )	IA-0000003	0.15
5.) Battery charger jack ( black )	BG-0000001	3.00
6.) Screw ( M2x4.0mm )( roundhead )	IA-0000058	0.15
7.) Spacer ( black ) ( 3.0x6.0x4.0mm )( plastic )	ID-0000071	0.15
8.) Volume pot ( small )( blue )	BI-0000040	5.00
9.) Screw ( M3x8.0mm )( roundhead )	IA-0000035	0.15
10.) Speaker ( STAR )( PR-050-A111 )( 16 ohms )( MAX 2W )	BF-0000007	8.95
11.) Speaker cone ( black ) ( 44.0x48.3x23.0mm )( 2 screw hole tabs )( plastic )	BF-0000016	5.00
12.) Screw ( M3x6.0mm )( roundhead )	IA-0000016	0.15
13.) Battery leads ( 60.0mm long wires w/ black male 2 pin plug ) ( 45.0mm long wires w/ battery charger jack )	BC-0000101	6.00
14.) Battery	BG-4000001	10.00
15.) Bracket ( battery )	IH-0000042	3.00
16.) Screw ( M3x4.0mm )( roundhead )	IA-0000010	0.15
17.) Gasket ( black ) ( speaker ring )( 43.8x49.8x3.0mm )( foam )	IB-0000009	0.50
18.) Chassis ( black )( tender ) ( has holes for battery charger jack )	GB-1200048	*15.00
19.) Screw ( M3x16.0mm )( washer head )( self-drilling threads )	IA-0000025	0.15
20.) T-bar	IG-0000001	0.50
21.) Coupler (Proto Sound® 2.0) ( 51.0mm long )	DD-0000032	10.00
22.) Spring ( nickel ) ( 6.5x14.0mm )( w/ 0.5mm thick wire )	IE-0000022	0.50
23.) Washer ( 4.5x10.0x5.0mm )	ID-0000009	0.15
24.) E-clip ( 3.0x8.0x0.5mm )	IF-0000001	0.15
25.) Screw ( 6/32x6.0mm )( washer head )	IA-0000214	0.15
26.) Truck ( black ) ( 3 axle )( leading/trailing )( tender )	DA-1250005	25.00
27.) Draw bar ( 60.7x10.0x1.2mm )( 1 step, 2 bends ) ( 2 large holes, 1 small hole )	GA-1200027	3.00
NS.) Axle bearing ( black ) ( 3 axle )( plastic )	DC-0000005	3.00

\*Requires Exchange  
All parts are priced as each

# N&W J Steam Engine Tender

## Tender Parts

