



# SUPERLINER PASSENGER CAR MAINTENANCE INSTRUCTIONS



Thank you for purchasing the MTH Premier Superliner Passenger Set. The cars's durable ABS body and die-cast trucks are traditionally sized for operation on any O-42 Gauge track. The unit should operate for years with any AC transformer and is completely compatible with most 3-rail locomotives, rolling stock and accessories.

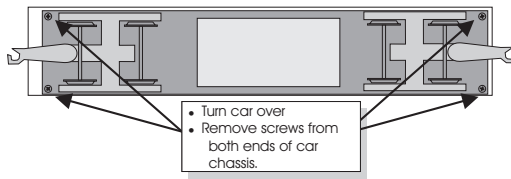
PREMIER  
LINE

# BASIC OPERATION & MAINTENANCE

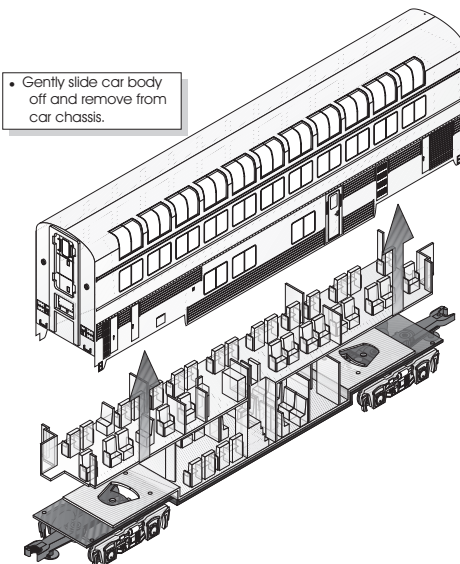
The MTH Premier Scale Superliner Cars are easy to operate and feature mechanical operating couplers for realistic uncoupling operation and lighted interiors with overhead illumination. Before operation, the pickup rollers and axles (where they meet the bronze bushings) should be lubricated with light household oil to ensure smooth, consistent electrical contact with a minimum of light flickering inside the car. Should the lights flicker during operation, the likely cause is insufficient lubrication on the pickup rollers. To lubricate, simply place a drop or two of light household oil on either side of the pickup bracket where the pickup roller is attached.

Occasionally, the lights inside the car may need to be replaced. To replace the lamps follow the disassembly instructions on the following illustrations. Replacement lamps can be obtained directly through MTH Electric Trains, 7020 Columbia Gateway Drive, Columbia, MD 21046-1532.

1

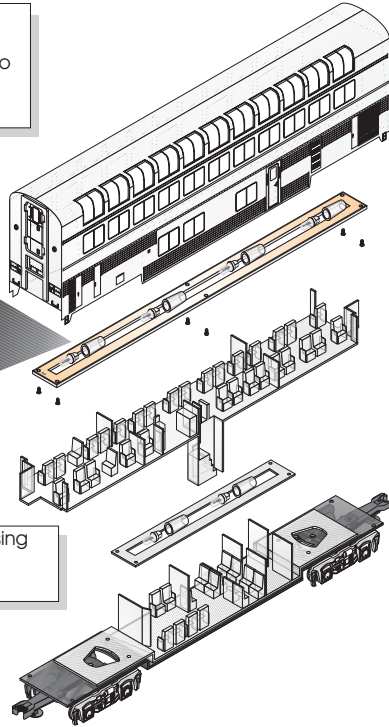
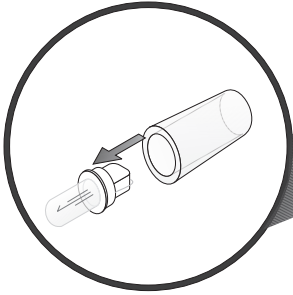


2



3

- Remove screws holding lighting assembly in place to gain access to the bulb.

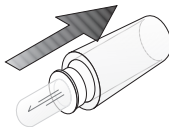


4

- Pull bulb from housing to remove.

5

- To replace bulb, simply fit a new bulb in the area left by the old one.
- Reassemble lighting assembly and car body.



# Amtrak Superliner Passenger Cars

## Sightseer Lounge

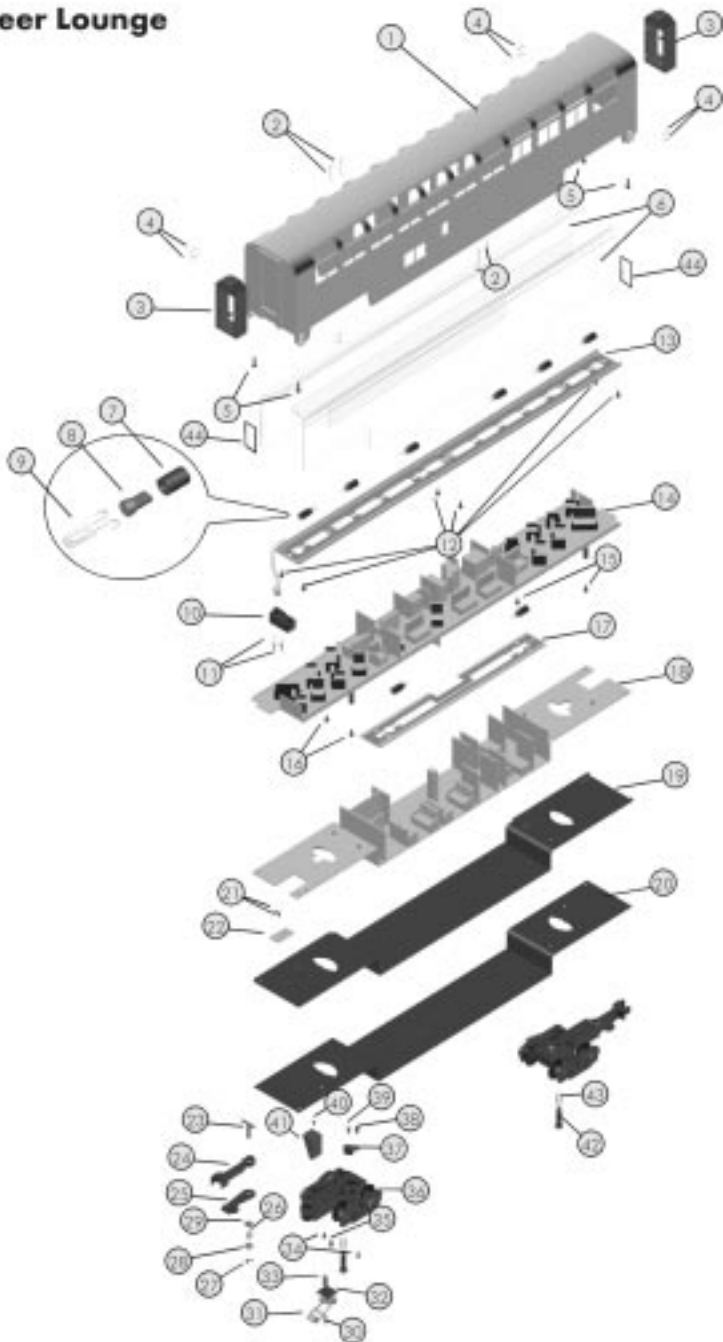
Name and Number	Part #
1.) Shell (Amtrak, #33046)	GE-0100001
2.) Handrail (14.0mm long)	GE-0100002
3.) Diaphragm (black)	FI-0000011
4.) Handrail (6.0mm long)	GE-0100003
5.) Screw (M3 x 16.0mm)(washerhead, self-drilling)	IA-0000025
6.) Windows	FA-0100004
7.) Socket (bulb) (for part #CH-0000006)	CH-0000007
8.) Bulb base (fits part #CH-0000007)	CH-0000006
9.) Bulb (18v)(grain of wheat)	CG-0000008
10.) Contact spring base	BH-0000001
11.) Contact springs	IE-0000015
12.) Screw (M3 x 6.0mm)(washerhead, self-drilling)	IA-0000070
13.) Bulb guide (16 1/2" long)	CH-0000009
14.) Interior detail (top)	GE-0100004
15.) Screw (M3 x 14.0mm)(roundhead, self-drilling)	IA-0000069
16.) Screw (M3 x 14.0mm)(roundhead, self-drilling)	IA-0000069
17.) Bulb guide (8 1/2" long)	CH-0000010
18.) Interior detail (bottom)	GE-0100005
19.) Frame	GB-0100003
20.) Undercarriage detail	IE-0100006
21.) Screw (4-40 x 4.0mm)(roundhead)	IA-0000021
22.) Contact spring board	BH-0000011
23.) T-bar (20.0 x 4.0mm)	IG-0000001
24.) Coupler (44.0mm long)	DD-0000003
25.) Coupler armature (37.7 mm long)	DD-0000002
26.) Spring (6.5 x 11.0mm)	IE-0000007
27.) E-clip (3.0 x 8.0mm x .5mm)	IF-0000002
28.) Washer (4.5 x 10.0 x .6mm)	ID-0000041
29.) Insulator washer (5.0 x 9.0 x .2mm)	ID-0000029
30.) Screw (M3 x 6.0mm)(chrome)(roundhead)	IA-0000015
31.) Pick-up (8.0mm roller)(24.0mm long)	BD-0000040
32.) Pick-up insulator (bottom)(flat)	BD-0000041
33.) Nut (2.5 x 5.0 x 7.0mm)	IC-0000008
34.) Screw (4-40 x 6.0mm)(roundhead)	IA-0000003
35.) Screw (4-40 x 6.0mm)(washerhead)	IA-0000028
36.) Truck (2 axle, black)	DA-0100003
37.) Pick-up insulator (top)(square)	BD-0000014
38.) Screw (4-40 x 6.0mm)(roundhead)	IA-0000003
39.) Screw (M3 x 6.0mm)(chrome)(self-drilling)(roundhead)	IA-0000015
40.) Screw (M2.6 x 6.0mm)(yellow zink, roundhead, self-drilling)	IA-0000032
41.) Deco part A	GE-0100007
42.) Bolt (M3 x 23.0mm)(w/5.0 x 17.0mm oversized shank)	IA-0000071
43.) Spring (6.5 x 12.0mm)	IE-0000018
44.) Door window lens	FA-0100005

(\* Parts require exchange)

## Coach

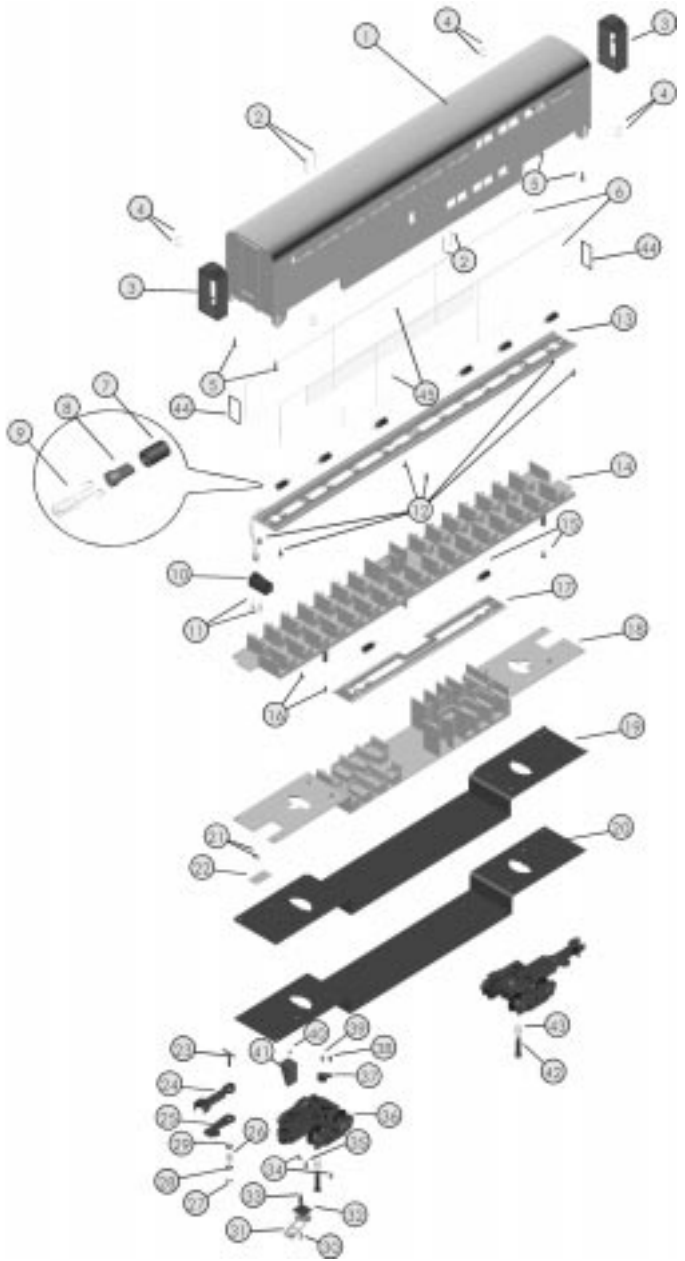
Name and Number	Part #
1.) Shell (Amtrak, #34132)	GE-0100008
1.) Shell (Amtrak, #34126)	GE-0100009
1.) Shell (Amtrak, #34110)	GE-0100010
2.) Handrail (14.0mm long)	GE-0100002
3.) Diaphragm (black)	FI-0000011
4.) Handrail (6.0mm long)	GE-0100003
5.) Screw (M3 x 16.0mm)(washerhead, self-drilling)	IA-0000025
6.) Windows(side)(ends)	FA-0100006
7.) Socket (bulb) (for part #CH-0000006)	CH-0000007
8.) Bulb base (fits part #CH-0000007)	CH-0000006
9.) Bulb (18v)(grain of wheat)	CG-0000008
10.) Contact spring base	BH-0000001
11.) Contact springs	IE-0000015
12.) Screw (M3 x 6.0mm)(washerhead, self-drilling)	IA-0000070
13.) Bulb guide (16 1/2" long)	CH-0000009
14.) Interior detail (top)	GE-0100011
15.) Screw (M3 x 14.0mm)(roundhead, self-drilling)	IA-0000069
16.) Screw (M3 x 14.0mm)(roundhead, self-drilling)	IA-0000069
17.) Bulb guide (8 1/2" long)	CH-0000010
18.) Interior detail (bottom)	GE-0100012
19.) Frame	GB-0100003
20.) Undercarriage detail	IE-0100006
21.) Screw (4-40 x 4.0mm)(roundhead)	IA-0000021
22.) Contact spring board	BH-0000011
23.) T-bar (20.0 x 4.0mm)	IG-0000001
24.) Coupler (44.0mm long)	DD-0000003
25.) Coupler armature (37.7 mm long)	DD-0000002
26.) Spring (6.5 x 11.0mm)	IE-0000007
27.) E-clip (3.0 x 8.0mm x .5mm)	IF-0000002
28.) Washer (4.5 x 10.0 x .6mm)	ID-0000041
29.) Insulator washer (5.0 x 9.0 x .2mm)	ID-0000029
30.) Screw (M3 x 6.0mm)(chrome)(roundhead)	IA-0000015
31.) Pick-up (8.0mm roller)(24.0mm long)	BD-0000040
32.) Pick-up insulator (bottom)(flat)	BD-0000041
33.) Nut (2.5 x 5.0 x 7.0mm)	IC-0000008
34.) Screw (4-40 x 6.0mm)(roundhead)	IA-0000003
35.) Screw (4-40 x 6.0mm)(washerhead)	IA-0000028
36.) Truck (2 axle, black)	DA-0100003
37.) Pick-up insulator (top)(square)	BD-0000014
38.) Screw (4-40 x 6.0mm)(roundhead)	IA-0000003
39.) Screw (M3 x 6.0mm)(chrome)(self-drilling)(roundhead)	IA-0000015
40.) Screw (M2.6 x 6.0mm)(yellow zink, roundhead, self-drilling)	IA-0000032
41.) Deco part A	GE-0100007
42.) Bolt (M3 x 23.0mm)(w/5.0 x 17.0mm oversized shank)	IA-0000071
43.) Spring (6.5 x 12.0mm)	IE-0000018
44.) Door window lens	FA-0100005
45.) Window (side)(middle)	FA-0100007

# Sightseer Lounge



PREMIER LINE

Coach



# SERVICE & WARRANTY INFORMATION

## HOW TO GET SERVICE UNDER THE TERMS OF THE LIMITED ONE YEAR WARRANTY

For warranty repair, do not return your product to the place of purchase unless it was purchased from Mike's Train House in Columbia, MD. Instead, follow the instructions below to obtain warranty service as our dealer network is not prepared to service the product under the terms of this warranty.

1. First, write, call or FAX MTH Electric Trains, 7020 Columbia Gateway Drive, Columbia, MD 21046, 410-381-2580 (FAX No. 410-381-6122), stating when it was purchased and what seems to be the problem. You will be given a return authorization number to assure that your merchandise will be properly handled upon its receipt.
2. CAUTION: Make sure the product is packed in its original factory packaging including its foam and plastic wrapping material so as to prevent damage to the merchandise. The shipment must be prepaid and we recommend that it be insured. *A cover letter, including your name, address, daytime phone number, Return Authorization number, a copy of your sales receipt and a full description of the problem, must be included to facilitate the repairs. Please include the description regardless of whether you discussed the problem with one of our service technicians when contacting MTH for your Return Authorization number.*
3. Please make sure you have followed the instructions carefully before returning any merchandise for service.

## LIMITED ONE YEAR WARRANTY

This item is warranted for one year from the date of purchase against defects in material or workmanship. We will repair or replace (at our option) the defective part without charge for parts or labor, if the item is returned to the address below within one year of the original date of purchase. This warranty does not cover items that have been abused or damaged by careless handling, light bulbs or traction tires. Transportation costs incurred by the customer are not covered under this warranty.

This warranty gives you specific legal rights and you may have other rights which vary from state to state.

ProtoSounds® is a trademark of MTH Electric Trains. DCRU® is a registered copyright of QS Industries, Inc. Lionel® and Railsound® are registered trademarks of Lionel L.L.C.

PREMIER LINE

